



LT2-B848

TWIN NEEDLE ,NEEDLE FEED WELTING MACHINE
(WITH POCKET LIP STANDARD HOOK)

LT2-B848-380

TWIN NEEDLE ,NEEDLE FEED WELTING MACHINE
(WITH POCKET LIP/ THREAD TRIMMER/STANDARD HOOK)



Needle Gauge: 9.5mm or 12.7mm
Single welt or Double welt

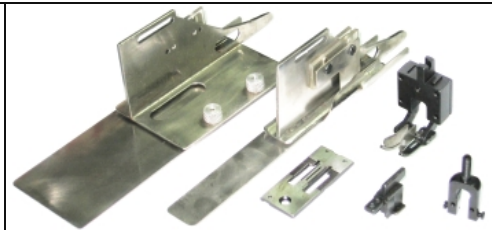


Needle Gauge: 9.5mm or 12.7mm
Single welt or Double welt

Feature

LT2-B848-380

Welting machine start and end sewing, auto back center knife auto control, sensor sewing, thread trimmer, and auto air cylinder lift foot, single welt or double welt, change gauge very easy.

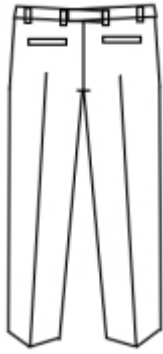


Specification

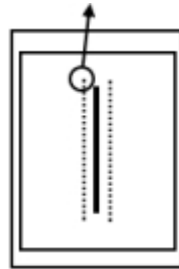
| | | | | | | | | |
|--|----------|-----|------|---|---|---|---|-------|
| Model | | | | | | | | |
| LT2-B848-XXX Twin needle, needle feed welting machine .(with pocket lip / thread trimmer / standard hook) | | | | | | | | |
| LT2-B848 | DPx17#16 | 7mm | 13mm | — | — | — | — | 2,000 |
| LT2-B848-380 | DPx17#16 | 7mm | 13mm | ★ | ★ | ★ | ★ | 2,000 |

Option Gauge

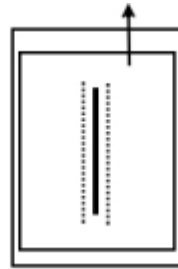
| Gauge Model | 9.5mm (3/8") | 11.1mm (7/16") | 12.7mm (1/2") | 15.9mm (5/8") | 19.1mm (3/4") | 22.2mm (7/8") | 25.4mm (1") | 31.75mm (1 1/4") | 38.1mm (1 1/2") | 50.8mm (2") |
|-------------|--------------|----------------|---------------|---------------|---------------|---------------|-------------|------------------|-----------------|-------------|
| 848 | O | | O | O | O | | | | | |
| 848-380 | O | | O | O | O | | | | | |



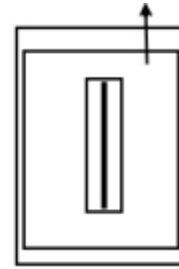
Electronic back stitch



Single or double welt



Material



- A: Pocket and material are stitched together. Meanwhile, knife will cut the pocket.
- B: Use scissor to cut the beginning and ending of stitch.
- C: At last, please turn the pocket.