

Needle works denote beautiful stories.....



GEM8500

High-speed lockstitch sewing machine

With beautiful design and appearance, excellent performance, durable and for long-times use, auto-lubrication, needle-gauge adjustment and convenient reversed seam, suitable for garment, knitting, leather and other different sewing materials. This series of machines use imported Japanese hook.



GEM8500 ★ -- -- -- 30.7 5 5.5/13 DB×1814 5000 400 660×230×663 28/35



GEM7-18/7-18B/7-18H

High-speed lockstitch sewing machine

This machine adopts fork-type feeding mechanism, link lever take-up, rotating hook catching thread. For arm shaft and hook shaft, it use whorl gear driving, dialed stitch length regulator, lever-type reverses feeding and auto-lubrication, with its popular character of nice uniform stitches, quiet sewing performance and minimum working vibration, it is popular used for sewing shirts, jackets, suits, dustcoats, bed covers and other garments.



GEM7-18 ★ -- -- -- 31.8 5 5.5/13 DB×1816 5000 370 676×256×630 25.5/33

GEM7-18H -- ★ -- -- 35 7 6/13 DP×5818-24 3500 370 676×256×630 25.5/33

GEM7-18B -- ★ -- -- 35 7 6/13 DP×5818-24 3500 370 676×256×630 25.5/33



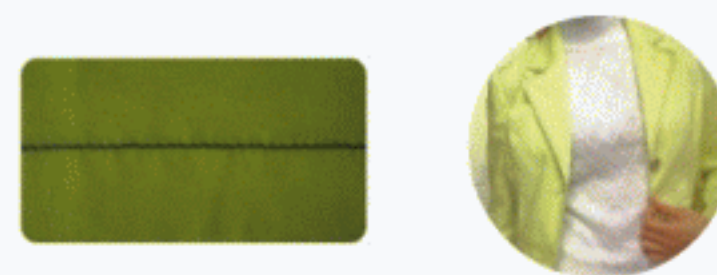
GEM5590

High-speed lockstitch sewing machine

With beautiful design and appearance, excellent performance, durable and for long-times use, auto-lubrication, needle-gauge adjustment and convenient reversed seam, suitable for garment, knitting, leather and other different sewing materials. Japanese hook as option for this series machines.



GEM5590 ★ -- -- -- 30.7 5 5.5/13 DB×1814 5000 400 666×230×663 26/35



GEM7-28/7-28B/7-28H

High-speed lockstitch sewing machine

This machine adopt fork-type feeding mechanism, link lever take-up, rotating hook catching thread. For arm shaft and hook shaft, it use whorl gear driving, dialed stitch length regulator, lever-type reverses feeding and auto-lubrication, with its popular character of nice uniform stitches, quiet sewing performance and minimum working vibration, it is popular used for sewing shirts, jackets, suits, dustcoats, bed covers and other garments.



GEM7-28 ★ -- -- -- 31.8 5 5.5/13 DB×1816 5000 370 676×256×630 25.5/33

GEM7-28H -- ★ -- -- 35 7 6/13 DP×6818-24 3500 370 676×256×630 25.5/33

GEM7-28B -- ★ -- -- 35 7 6/13 DP×6818-24 3500 370 676×256×630 25.5/33

